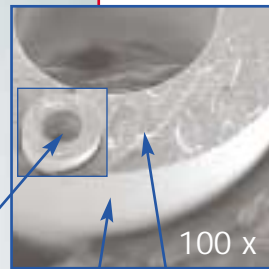
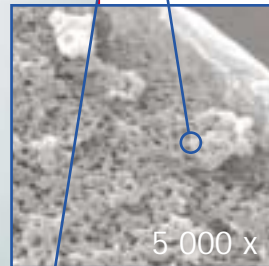


# MEDOS HILITE® 7000 LT

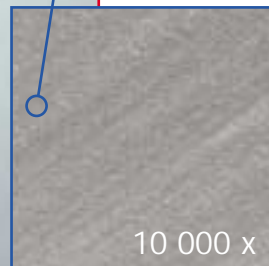
*Oxygenator for Long-term Application*



100 x



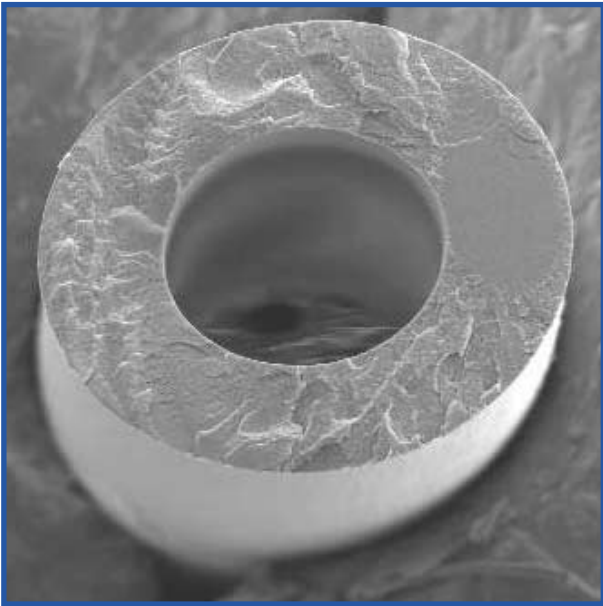
5 000 x



10 000 x

# MEDOS HILITE® 7000 LT

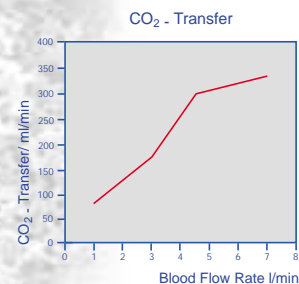
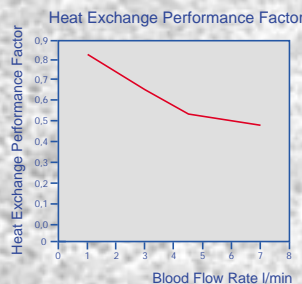
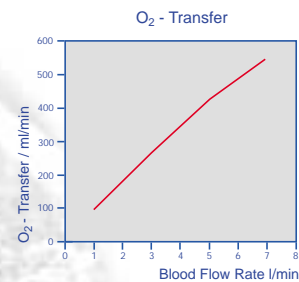
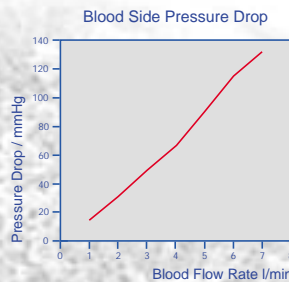
## Oxygenator for Long-term Application



The HILITE® 7000 LT with closed hollow fibres is designed for long-term application. Other than the microporous fiber of the HILITE® 7000, the closed fiber prevents the typical problem of plasma leakage. The transfer rate per area of the closed hollow fiber is nearly identical to the microporous hollow fiber, and therefore much better compared to usual silicone membranes.

### Specifications

■ Blood Flow Rate	1 - 7 litres/minutes
■ Static Priming Volume	275 ml
■ Gas Exchanger	
Material	Polymethylpentene
Type	Plasma tight Hollow Fibre
OD	380 µm
Surface Area	1,9 m²
■ Heat Exchanger	
Material	Polyester
Type	Hollow Fibre
Surface Area	0,45 m²
■ Port Configuration	please see HILITE® 7000



### Ordering information

PRODUCT	REF.-NO.	UNIT
HILITE® 7000 LT Hollow Fibre Oxygenator Model 0L01	ME 6202 0L01	10/carton
HILITE® 7000 LT Hollow Fibre Oxygenator Model CL01, Rheoparin® coated	ME 6202 CL01	10/carton
HILITE® 7000 LT Hollow Fibre Oxygenator Model 0L61	ME 6202 0L61	10/carton
HILITE® 7000 LT Hollow Fibre Oxygenator Model CL61, Rheoparin® coated	ME 6202 CL61	10/carton
HILITE® 7000 LT System Model 0L02	ME 6202 0L02	3/carton
HILITE® 7000 LT System Model CL02, Rheoparin® coated	ME 6202 CL02	3/carton
HILITE® 7000 LT System Model 0L62	ME 6202 0L62	3/carton
HILITE® 7000 LT System Model CL62, Rheoparin® coated	ME 6202 CL62	3/carton

Rheoparin®: MEDOS Heparin coating

HILITE® 7000 LT uncoated: **CE**0481  
HILITE® 7000 LT Rheoparin® coated: **CE**0123



MEDOS Medizintechnik AG • Obere Steinfurt 8-10 • D-52222 Stolberg • Germany  
Phone: +49(0)2402-96 64 0 • Fax: +49(0)2402-96 64 60  
www.medos-ag.com • info@medos-ag.com